

DEMAG AC 615

200 TONNE ALL TERRAIN HYDRAULIC CRANE



DEMAG AC 615

200 TONNE MOBILE HYDRAULIC CRANE

Versatility

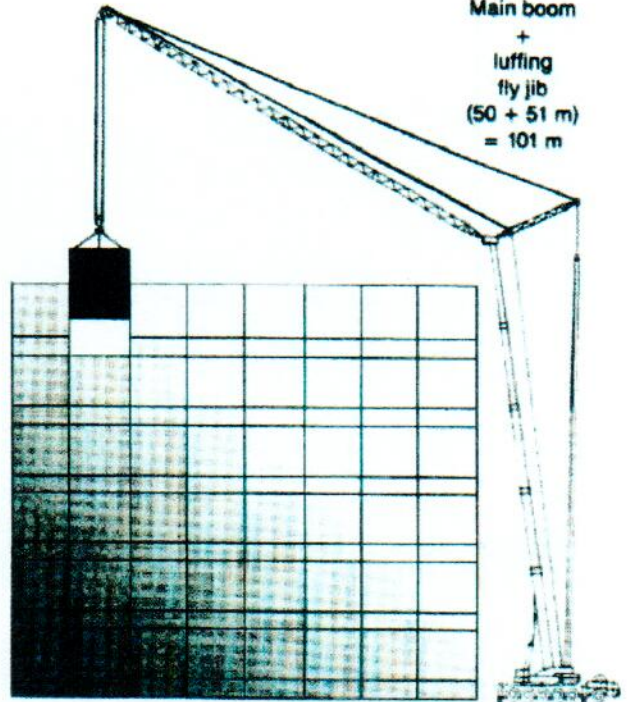
Main boom
50 m



Main boom
+
fixed fly jib
(50 + 33)
= 83 m

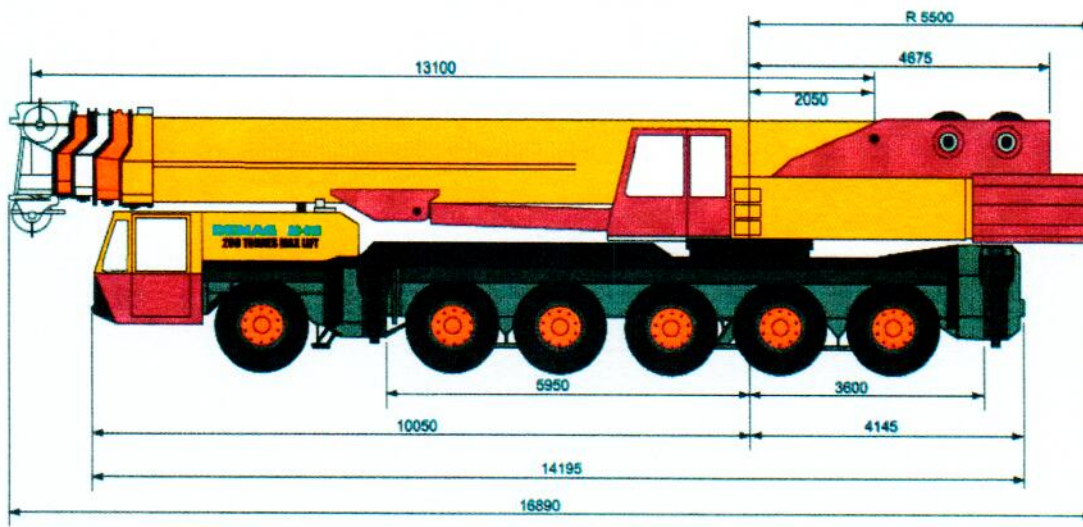


Main boom
+
luffing
fly jib
(50 + 51 m)
= 101 m

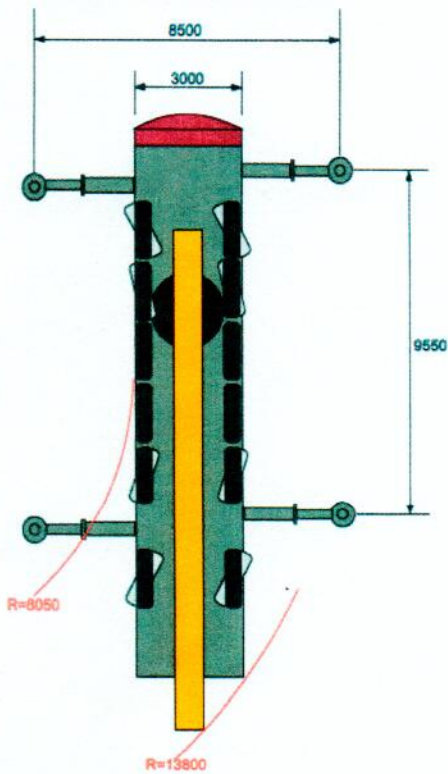


DEMAG AC 615

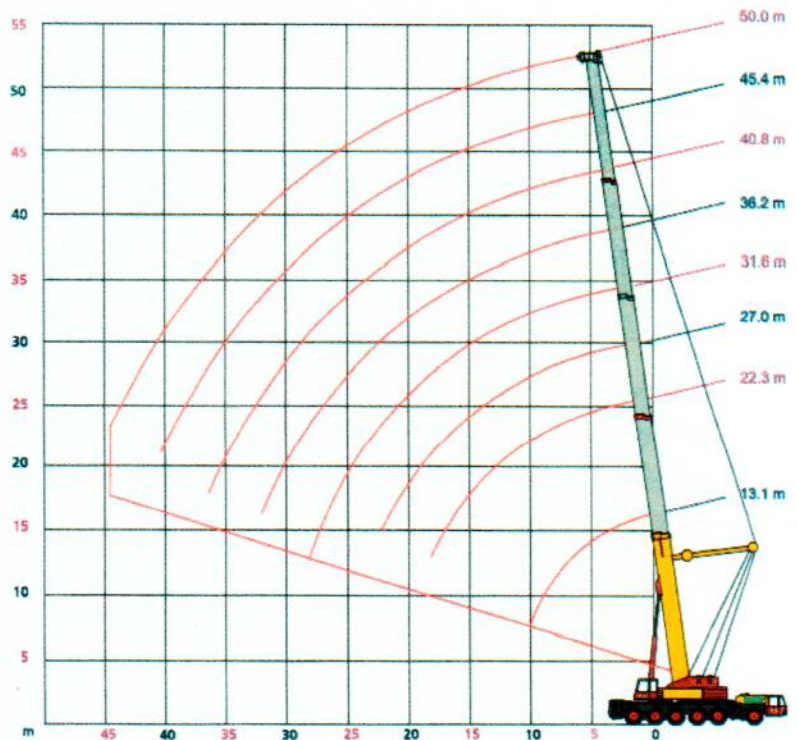
200 TONNE MOBILE HYDRAULIC CRANE



GENERAL DIMENSIONS



WORKING RANGE - MAIN BOOM



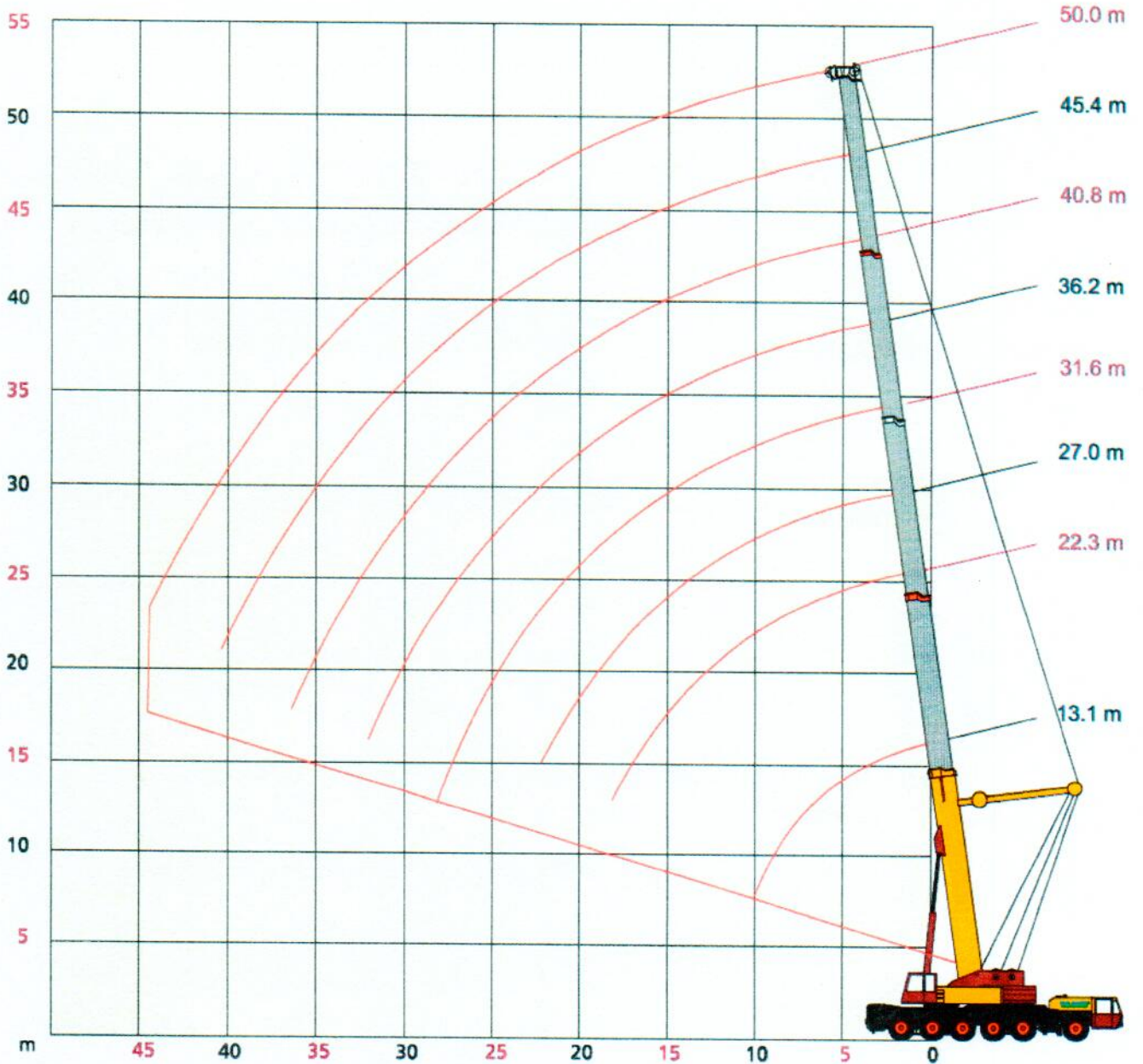
COUNTERWEIGHT	TAIL SWING (from centre of rotation)	COUNTERWEIGHT WIDTH
0, 12t, 26t, 40t	R = 5500 mm	3000 mm
70t	R = 5570 mm	5000 mm

DEMAG AC 615

200 TONNE MOBILE HYDRAULIC CRANE

360°

Working range-Main Boom



DEMAG AC 615

200 TONNE MOBILE HYDRAULIC CRANE

LOAD RATINGS IN TONNES

70 t   360°  OUTRIGGER BASE - 8500 mm **DIN 15019.2**

Radius (m)	Main boom								
	13.1 t	22.3 t	27.0 t	27.0 t	31.6 t	36.2 t	40.8 t	45.4 t	50.0 t
2.8	200.0								
3	170.0								
3.5	151.0								
4	138.0	120.0							
4.5	126.0	120.0							
5	116.0	112.0	105.0	78.0					
6	102.0	100.0	100.0	78.0	80.0				
7	90.0	88.0	87.0	78.0	77.5	80.0			
8	78.0	78.0	78.0	73.0	75.0	59.0	48.0		
9	70.0	70.0	70.0	67.0	69.0	55.0	47.0	38.0	
10	61.0	62.0	62.0	62.0	63.0	55.5	45.0	37.0	28.5
12		51.6	53.0	54.0	52.6	42.5	39.5	34.5	27.7
14		42.6	45.1	47.0	43.6	37.0	34.5	31.5	27.0
16		36.0	35.8	41.5	36.9	32.0	30.5	28.5	24.5
18		30.9	32.6	36.0	31.7	28.5	27.0	26.0	23.0
20			28.3	31.5	27.6	26.0	24.0	23.5	20.5
22			24.9	28.0	25.9	23.0	22.0	21.5	19.0
24					23.0	21.5	20.5	19.5	17.0
26					20.6	19.5	18.0	18.0	15.5
28					17.2	17.4	17.0	16.5	14.5
30						15.6	16.0	15.0	13.5
32						13.3	14.7	14.0	12.5
34							13.2	13.0	11.5
36							11.8	11.8	10.0
38								10.6	9.5
40								9.5	8.6
42									7.3
44									6.5

Boom extension sequence

Tele 1	0	50	50	0	50	84	84	84	100
Tele 2	0	0	50	50	50	84	84	84	100
Tele 3	0	50	50	50	50	84	84	84	100
Tele 4	0	0	0	50	50	0	50	100	100

DEMAG AC 615

200 TONNE MOBILE HYDRAULIC CRANE

LOAD RATINGS IN TONNES

40 t   360°  OUTRIGGER BASE - 8500 mm **DIN 15019.2**

Main boom

Radius (m)	13.1 m	22.3 m	27.0 m	27.0 m	31.6 m	36.2 m	37.6 m	40.8 m	40.8 m	45.4 m	50.0 m
	t	t	t	t	t	t	t	t	t	t	t
2.8	180.0*										
3	170.0*										
4	138.0	120.0									
5	116.0	112.0	105.0	78.0							
6	99.2	98.6	98.5	78.0	80.0						
7	84.7	84.1	84.0	78.0	75.0	60.0	39.5				
8	73.7	73.0	72.9	73.0	70.5	57.0	39.5	48.0	30.0		
9	64.5	63.9	63.7	67.0	65.0	53.0	39.5	46.0	30.0	38.0	
10	55.3	56.2	56.1	60.0	57.3	49.0	36.0	44.0	30.0	38.0	28.5
12		44.9	44.8	48.5	45.9	41.0	30.5	38.5	30.0	33.5	27.7
14		35.8	35.6	39.0	37.1	35.5	26.3	33.5	26.0	30.5	27.0
16		28.6	28.4	31.5	29.7	28.6	23.0	29.7	22.7	27.5	24.5
18		23.4	23.2	26.2	24.5	23.4	20.5	24.4	20.0	25.0	22.0
20			19.3	22.1	20.5	19.4	18.5	20.4	17.8	21.2	19.5
22			16.3	19.0	17.4	16.3	16.9	17.3	15.9	18.1	17.8
24					15.0	13.8	15.4	14.8	14.3	15.5	15.3
26					12.9	11.7	14.1	12.7	13.0	13.5	13.2
28					11.2	9.9	13.0	10.9	11.9	11.7	11.4
30						8.4	11.8	9.3	11.0	10.1	9.8
32						7.1	10.6	8.0	10.2	8.8	8.5
34							9.4	6.9	9.3	7.6	7.3
36								5.9	8.3	6.6	6.3
38										5.8	5.4
40										5.0	4.7
42											4.0
44											3.4

Boom extension sequence

Tele 1	0	50	50	0	50	84	0	84	0	84	100
Tele 2	0	0	50	50	50	84	84	84	100	84	100
Tele 3	0	50	50	50	50	84	84	84	100	84	100
Tele 4	0	0	0	50	50	0	100	50	100	100	100

DEMAG AC 615

200 TONNE MOBILE HYDRAULIC CRANE

LOAD RATINGS IN TONNES

26 t   360°  OUTRIGGER BASE - 8500 mm **DIN 15019.2**
Main boom

Radius (m)	13.1 m	22.3 m	27.0 m	27.0 m	31.6 m	36.2 m	37.6 m	40.8 m	40.8 m	45.4 m	50.0 m
	t	t	t	t	t	t	t	t	t	t	t
3	165.0										
3.5	146.0										
4	130.0	115.0									
4.5	120.0	110.0									
5	108.0	104.0	100.0	78.0							
6	92.2	91.7	91.5	78.0	77.0						
7	78.5	77.9	77.7	78.0	73.0	58.0	39.5				
8	67.0	66.4	66.2	71.0	67.6	54.0	39.5	46.0	30.0		
9	58.2	57.6	57.4	61.5	58.7	50.0	39.5	44.5	30.0	36.0	
10	51.1	50.3	50.2	54.0	51.7	44.0	36.0	42.0	30.0	34.0	28.5
12		36.2	36.1	39.5	37.6	36.4	30.5	37.6	30.0	32.0	27.0
14		27.5	27.4	30.5	28.8	27.6	26.3	28.7	26.0	29.0	26.0
16		21.7	21.5	24.6	22.8	21.7	23.0	22.8	22.7	23.6	23.3
18		17.5	17.3	20.2	18.5	17.4	20.5	18.4	20.0	19.3	19.0
20			14.0	16.9	15.3	14.1	17.7	15.2	17.6	16.0	15.7
22			11.4	14.2	12.7	11.5	14.9	12.5	14.9	13.4	13.1
24					10.6	9.3	12.8	10.4	12.7	11.2	10.9
26					8.8	7.5	11.0	8.5	11.0	9.4	9.1
28					7.3	6.0	9.5	7.0	9.4	7.8	7.5
30						4.8	8.2	5.7	8.1	6.5	6.2
32						3.7	7.1	4.7	7.0	5.4	5.1
34							6.2	3.7	6.0	4.5	4.2
36								2.9	5.2	3.7	3.3
38										3.0	2.6
40										2.3	2.0
42											1.4
44											1.0

Boom extension sequence

Tele 1	0	50	50	0	50	84	0	84	0	84	100
Tele 2	0	0	50	50	50	84	84	84	100	84	100
Tele 3	0	50	50	50	50	84	84	84	100	84	100
Tele 4	0	0	0	50	50	0	100	50	100	100	100

DEMAG AC 615

200 TONNE MOBILE HYDRAULIC CRANE

LOAD RATINGS IN TONNES

12 t   360°  OUTRIGGER BASE - 8500 mm **DIN 15019.2**

Main boom

Radius (m)	13.1 m	22.3 m	27.0 m	27.0 m	31.6 m	36.2 m	37.6 m	40.8 m	40.8 m	45.4 m	50.0 m
	t	t	t	t	t	t	t	t	t	t	t
3	157.0										
3.5	136.0										
4	120.0	110.0									
4.5	107.0	106.0									
5	96.5	96.0	95.0	78.0							
6	79.4	78.8	78.7	78.0	74.0						
7	66.1	65.6	65.4	74.5	66.7	54.0	39.5				
8	53.0	52.4	52.3	63.0	54.2	52.7	39.5	45.0	30.0		
9	41.8	41.2	41.1	50.0	42.8	41.4	39.5	43.0	30.0	34.0	
10	34.1	33.5	33.4	41.0	34.9	33.7	36.0	34.9	30.0	32.0	25.0
12		23.4	23.3	29.6	24.8	23.6	30.5	24.8	30.0	25.7	23.0
14		17.0	16.9	22.1	18.2	17.1	23.2	18.2	23.2	19.0	18.7
16		12.8	12.6	17.1	13.9	12.8	18.1	13.8	18.1	14.6	14.3
18		9.8	9.6	13.6	10.8	9.8	14.5	10.7	14.5	11.5	11.2
20			7.4	11.0	8.5	7.5	11.8	8.4	11.8	9.2	8.9
22			5.7	8.9	6.8	5.8	9.7	6.7	9.6	7.4	7.1
24					5.4	4.3	7.9	5.2	7.9	5.9	5.7
26					4.3	3.0	6.5	4.0	6.5	4.8	4.5
28					3.2	1.9	5.3	2.9	5.3	3.7	3.4
30						1.0	4.4	1.9	4.3	2.7	2.4
32							3.6	1.1	3.5	1.9	1.6
34							2.9		2.8	1.2	0.9
36									2.2		

Boom extension sequence

Tele 1	0	50	50	0	50	84	0	84	0	84	100
Tele 2	0	0	50	50	50	84	84	84	100	84	100
Tele 3	0	50	50	50	50	84	84	84	100	84	100
Tele 4	0	0	0	50	50	0	100	50	100	100	100

DEMAG AC 615

200 TONNE MOBILE HYDRAULIC CRANE

LOAD RATINGS IN TONNES

0 t



360°

OUTRIGGER BASE - 8500 mm DIN 15019.2

Main boom

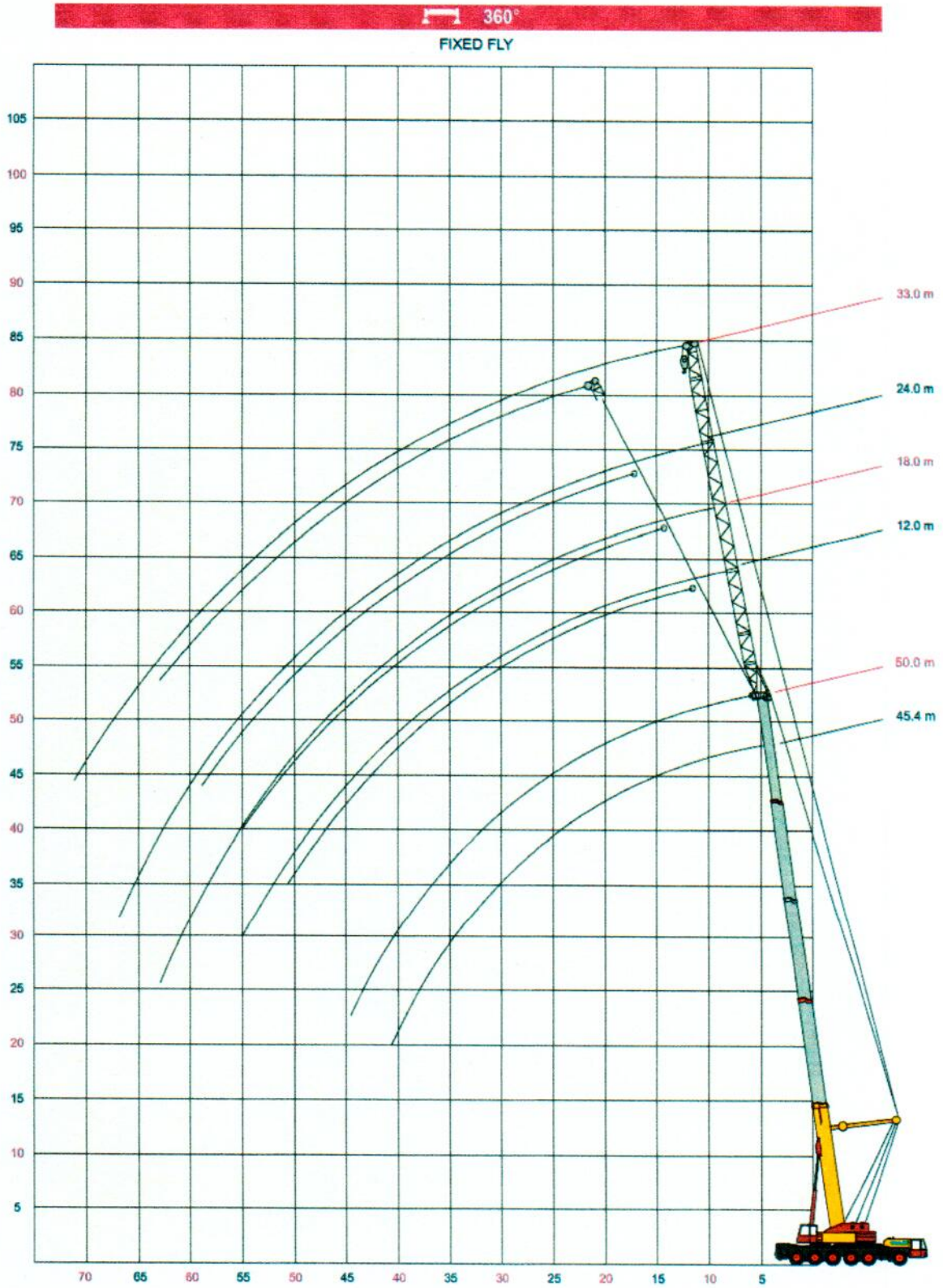
Radius (m)	13.1 m	22.3 m	27.0 m	27.0 m	31.6 m	36.2 m	37.6 m	40.8 m	40.8 m	45.4 m	50.0 m
	t	t	t	t	t	t	t	t	t	t	t
3	147.0										
3.5	127.0										
4	112.0	105.0									
4.5	100.0	100.0									
5	91.0	90.4	90.0	78.0							
6	72.0	71.4	71.3	78.0	70.0						
7	51.9	51.2	51.1	55.5	53.3	50.0	39.5				
8	38.3	37.3	37.6	41.0	39.9	38.0	39.5	39.5	30.0		
9	29.3	28.6	28.5	32.0	30.4	28.9	33.5	30.4	30.0	32.0	
10	22.9	22.3	22.1	25.6	23.8	22.5	26.8	23.8	26.8	24.9	24.0
12		14.4	14.3	17.3	15.8	14.6	18.4	15.8	18.3	16.7	16.4
14		9.8	9.7	12.4	11.0	9.9	13.4	11.0	13.4	11.8	11.6
16		6.8	6.7	9.2	7.9	6.8	10.1	7.9	10.1	8.7	8.4
18		4.7	4.5	7.0	5.7	4.7	7.8	5.6	7.8	6.4	6.1
20			2.6	5.3	4.0	2.7	6.0	3.9	6.0	4.7	4.5
22			1.2	4.1	2.5	1.2	4.7	2.4	4.7	3.3	3.0
24					1.3		3.7	1.1	3.6	2.0	1.7
26							2.7		2.6	1.0	
28							1.8		1.8		
30							1.1		1.0		

Boom extension sequence

Tele 1	0	50	50	0	50	84	0	84	0	84	100
Tele 2	0	0	50	50	50	84	84	84	100	84	100
Tele 3	0	50	50	50	50	84	84	84	100	84	100
Tele 4	0	0	0	50	50	0	100	50	100	100	100

DEMAG AC 615

200 TONNE MOBILE HYDRAULIC CRANE



DEMAG AC 615

200 TONNE MOBILE HYDRAULIC CRANE

LOAD RATINGS IN TONNES

26 t   360° OUTRIGGER BASE - 8500 mm DIN 15019.2
Fixed Fly

	Radius	
	m	12m
		3 deg
		20 deg
	12	19,0
	14	18,1
	16	17,0
	18	15,7
Main	20	14,8
Boom	22	13,9
	24	12,4
45.4m	26	10,5
	28	8,9
	30	7,5
	34	5,3
	38	3,6
	42	2,3
	46	1,2

	Radius m	Fixed Fly Jib Length							
		12m 3 deg	20 deg	18m 3 deg	24m 3 deg	20 deg	33m 3 deg	20 deg	
	12	5,3							
	14	15,0							
	16	14,4	11,5	8,7					
	18	13,7	11,0	8,7	6,8				
Main	20	13,0	10,5	8,3	5,4	6,8		4,6	
Boom	22	12,3	10,1	7,8	5,4	6,4		4,6	
	24	11,7	9,7	7,4	5,3	6,1	3,9	4,6	
	26	10,1	9,4	7,0	5,1	5,8	3,9	4,4	
50.0m	28	8,4	9,0	6,7	5,0	5,5	3,8	4,2	
	30	7,1	7,9	6,3	4,9	5,2	3,7	4,0	
	34	4,9	5,6	4,6	4,6	4,7	3,4	3,6	
	38	3,2	3,8	3,0	3,9	3,4	3,2	3,3	
	42	1,9	2,4	1,7	2,4	2,1	3,0	2,4	
	46	0,9	1,2		1,3	1,0	1,9	1,3	
	50						0,9	1,5	

DEMAG AC 615

200 TONNE MOBILE HYDRAULIC CRANE

LOAD RATINGS IN TONNES

12 t   360°  OUTRIGGER BASE - 8500 mm **DIN 15019.2**

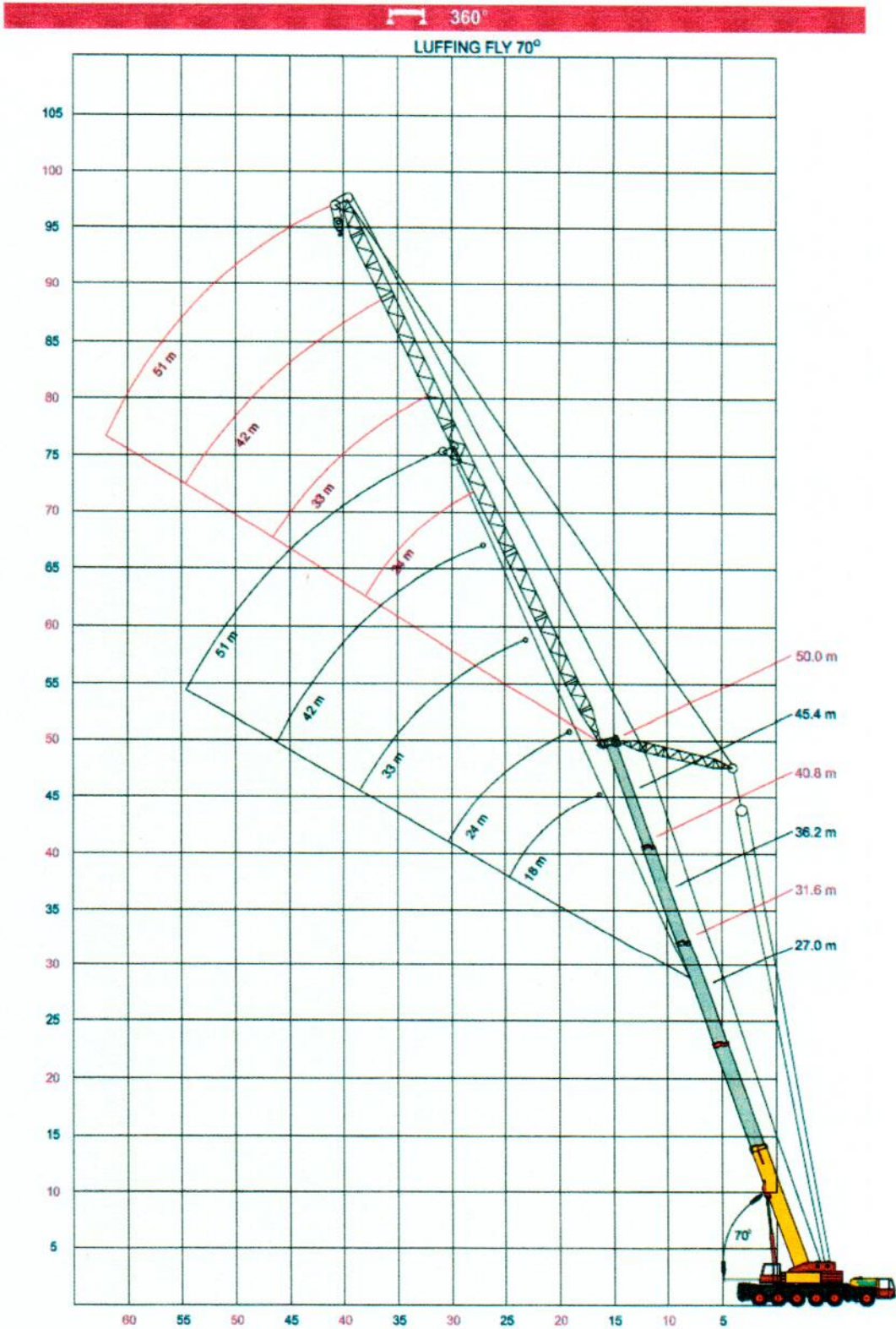
Fixed Fly

	Radius	
	m	12m
		3 deg
		20 deg
	12	19,0
	14	18,1
	16	17,0
	18	14,4
Main	20	11,6
Boom	22	9,3
	24	7,5
45.4m	26	6,0
	28	4,7
	30	3,7
	34	2,0
	38	1,2

	Radius		Fixed Fly Jib Length			
	m	12m	18m	24m		33m
		3 deg	20 deg	3 deg	20 deg	3 deg
	12	15,3				
	14	15,0				
	16	14,4	11,5	8,7		
	18	13,7	11,0	8,7	6,8	
Main	20	11,2	10,5	8,3	5,4	6,8
Boom	22	8,9	10,1	7,8	5,4	6,4
	24	7,1	8,3	6,8	5,3	6,1
50.0m	26	5,6	6,7	5,4	5,1	5,7
	28	4,3	5,3	4,1	5,0	4,5
	30	3,3	4,1	3,0	4,3	3,5
	34	1,6	2,3	1,3	2,4	1,8
	38		0,9		1,0	1,7

DEMAG AC 615

200 TONNE MOBILE HYDRAULIC CRANE



DEMAG AC 615

200 TONNE MOBILE HYDRAULIC CRANE

LOAD RATINGS IN TONNES

40 t   360°  OUTRIGGER BASE - 8500 mm  DIN 15019.2
Luffing Fly-Main boom 70°

Main Boom	Radius m	Luffing Fly Jib Length				
		18m	24m	33m	42m	51m
27,0 m	20	24.0				
	22	21.3	20.9			
	24	19.0	18.6			
	26		16.8	16.0		
	28		15.3	14.9		
	30		14.0	13.6		
	32			12.5	10.8	
	34			11.5	10.2	
	36			10.7	9.7	7.3
	38			9.9	9.1	6.8
	40				8.7	6.4
	42				8.1	6.0
	44				7.7	5.8
	46				7.3	5.5
	48					5.3
	50					5.2
	52					5.1
54					4.9	

Main Boom	Radius m	Luffing Fly Jib Length				
		18m	24m	33m	42m	51m
36.2m	22	17.5				
	24	16.5				
	26	15.3	13.5			
	28	14.0	12.6			
	30		11.9			
	32		11.2	10.2		
	34		10.5	9.6		
	36			9	7.5	
	38			8.4	7.0	
	40			8.0	6.6	6.0
	42			7.5	6.3	5.5
	44				6.0	5.0
	46				5.7	4.6
	48				5.5	4.3
	50				5.3	4.1
	52					3.9
	54					3.7
56					3.6	
58					3.5	

DEMAG AC 615

200 TONNE MOBILE HYDRAULIC CRANE

LOAD RATINGS IN TONNES

40 t



360°

OUTRIGGER BASE - 8500 mm

DIN 15019.2

Luffing Fly-Main boom 70°

Main Boom	Radius m	Luffing Fly Jib Length			
		24m	33m	42m	51m
40.8m	28	11.0			
	30	10.5			
	32	10.0			
	34	9.6	9.0		
	36		8.0		
	38		7.6	6.5	
	40		7.2	6.2	
	42		6.8	5.9	4.5
	44		6.5	5.6	4.1
	46			5.3	3.8
	48			5.1	3.7
	50			5.0	3.5
	52				3.4
	54				3.3
	56				3.2
58				3.1	

Main Boom	Radius m	Luffing Fly Jib Length			
		24m	33m	42m	51m
45.4 m	30	8.7			
	32	8.4			
	34	8.2			
	36	8.0	6.6		
	38		6.3		
	40		5.9	4.5	
	42		5.8	4.3	
	44		5.6	4.1	2.8
	46			3.9	2.7
	48			3.8	2.6
	50			3.6	2.6
	52			3.5	2.5
	54			3.4	2.4
	56				2.3
	58				2.2
60				2.2	
62				2.2	

DEMAG AC 615

200 TONNE MOBILE HYDRAULIC CRANE

LOAD RATINGS IN TONNES

40 t



360°

OUTRIGGER BASE - 8500 mm

DIN 15019.2

Luffing Fly-Main boom 70°

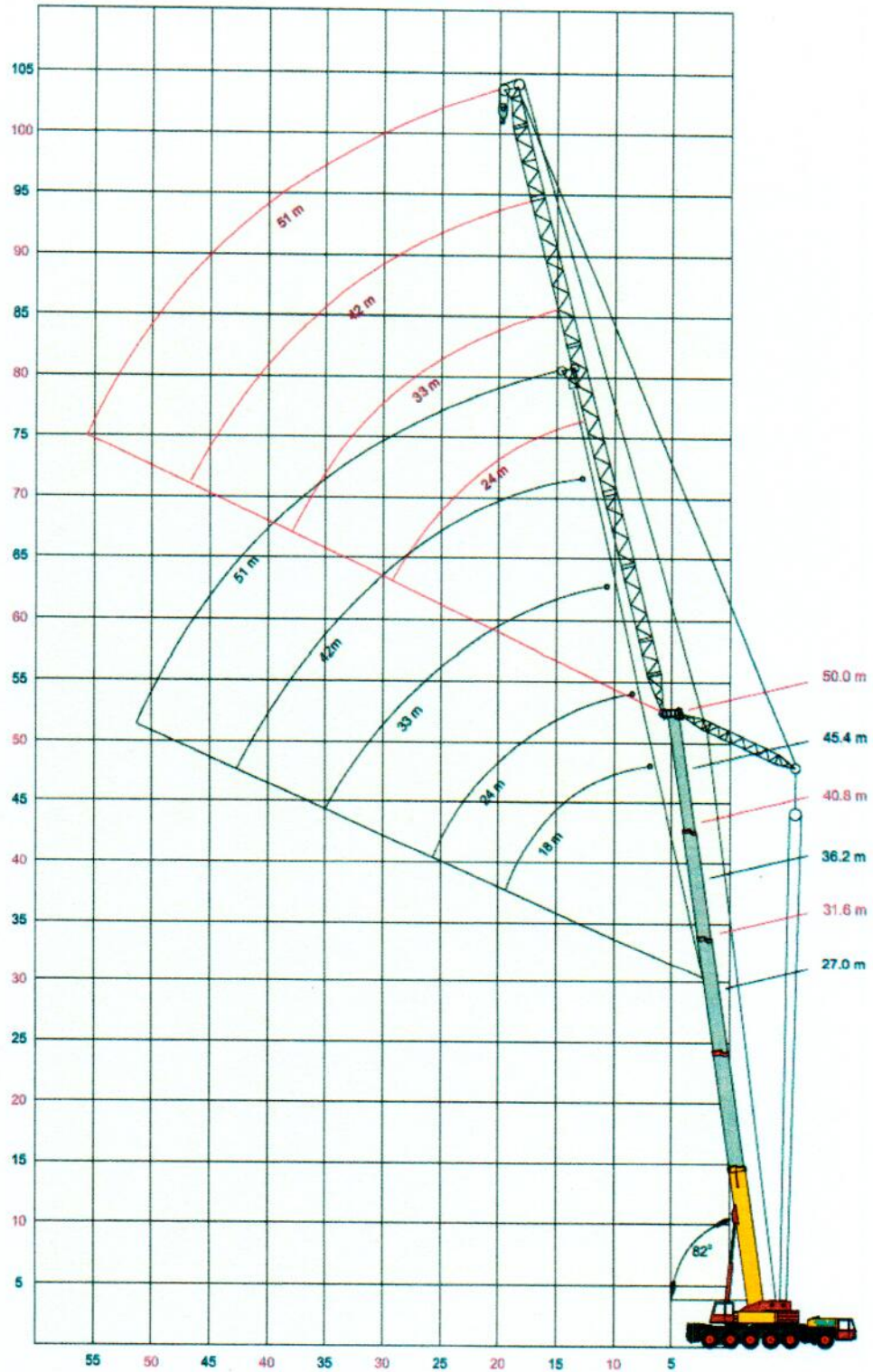
Main Boom	Radius m	Luffing Fly Jib Length			
		24m	33m	42m	51m
	32	7.2			
	34	7.0			
	36	6.8			
	38	6.6	5.2		
	40		5.0		
	42		4.9	3.2	
	44		4.7	3.2	
	46		4.5	3.2	1.4
50.0 m	48			3.1	1.4
	50			3.0	1.4
	52			2.9	1.4
	54			2.8	1.4
	56				1.4
	58				1.4
	60				1.4
	62				1.4

DEMAG AC 615

200 TONNE MOBILE HYDRAULIC CRANE

360°

LUFFING FLY 82°



DEMAG AC 615

200 TONNE MOBILE HYDRAULIC CRANE

LOAD RATINGS IN TONNES

40 t



360°

OUTRIGGER BASE - 8500 mm DIN 15019.2

Luffing Fly-Main boom 82°

Main Boom	Radius m	Luffing Fly Jib Length			
		24m	33m	42m	51m
40.8m	14	16.0			
	16	16.0			
	18	16.0	12.0		
	20	16.0	12.0	8.8	
	22	16.0	12.0	8.8	4.6
	24	15.5	12.0	8.8	4.6
	28	15.0	12.0	8.8	4.6
	28		11.7	8.8	4.6
	30		11.3	8.4	4.8
	32		11.0	8.2	4.6
	34		10.2	8.0	4.6
	36			7.9	4.8
	38			7.7	4.6
	40			7.6	4.6
	42			7.3	4.6
	44				4.6
46				4.6	
48				4.6	
50				4.6	

Main Boom	Radius m	Luffing Fly Jib Length			
		24m	33m	42m	51m
45,4 m	16	12.7			
	18	12.6	9.2		
	20	12.5	9.2	6.0	
	22	12.4	9.2	6.0	
	24	12.2	9.2	6.0	3.5
	26	12.0	9.2	6.0	3.5
	28		9.2	6.0	3.5
	30		9.2	6.0	3.5
	32		9.0	6.0	3.5
	34		8.5	6.0	3.5
	36			6.0	3.5
	38			8.0	3.5
	40			6.0	3.5
	42			5.8	3.5
	44			5.6	3.5
	46				3.5
48				3.5	
50				3.5	
52				3.0	

DEMAG AC 615

200 TONNE MOBILE HYDRAULIC CRANE

LOAD RATINGS IN TONNES

40 t   360°  OUTRIGGER BASE - 8500 mm **DIN 15019.2**

Luffing Fly-Main boom 82°

Main Boom	Radius m	Luffing Fly Jib Length				
		18m	24m	33m	42m	51m
27,0 m	10	42.0				
	12	41.0	30.0			
	14	37.0	30.0	22.6		
	16	31.0	30.0	22.6		
	18	24.0	26.6	22.6	17.0	
	20		23.1	22.6	16.2	11.6
	22		20.0	21.3	15.6	11.6
	24		15.4	20.0	14.8	11.2
	26			17.3	14.0	10.7
	28			14.8	13.3	10.1
	30			12.5	12.6	9.6
	32			10.0	12.0	9.1
	34				11.3	8.5
	36				10.0	7.8
	38				8.6	7.3
	40				7.0	7.0
	42					6.8
44					6.6	
46					5.6	
48					4.6	
50					3.6	

Main Boom	Radius m	Luffing Fly Jib Length				
		18m	24m	33m	42m	51m
36.2m	12	27.0				
	14	26.5	22.0			
	16	25.6	22.0			
	18	25.0	21.5	15.5		
	20	21.2	20.5	15.5	11.4	7.7
	22		19.5	15.5	11.4	7.7
	24		18.5	15.0	11.4	7.7
	26		13.9	14.5	11.4	7.7
	28			14.0	11.0	7.7
	30			13.5	10.5	7.7
	32			11.8	10.1	7.7
	34			9.4	9.8	7.7
	36				9.4	7.4
	38				9.0	7.1
	40				8.2	6.8
	42				6.7	6.5
	44					6.1
46					5.8	
48					5.4	
50					4.4	

DEMAG AC 615

200 TONNE MOBILE HYDRAULIC CRANE

LOAD RATINGS IN TONNES

40 t



360°

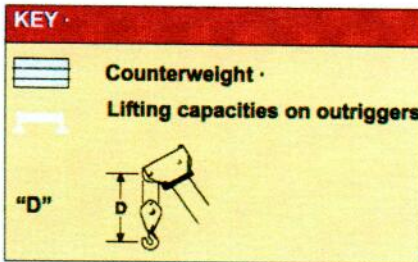
OUTRIGGER BASE - 8500 mm DIN 15019.2

Luffing Fly-Main boom 82°

Main Boom	Radius m	Luffing Fly Jib Length			
		24m	33m	42m	51m
50.0 m	16	8.5			
	18	8.5	6.5		
	20	8.5	6.5	3.9	
	22	8.5	8.8	3.9	
	24	8.5	6.5	3.9	1.8
	26	8.5	6.5	3.9	1.8
	28		6.5	3.9	1.8
	30		6.5	3.9	1.8
	32		6.5	3.9	1.8
	34		6.5	3.9	1.8
	36		6.5	3.9	1.8
	38			3.9	1.8
	40			3.9	1.8
	42			3.9	1.8
	44			3.9	1.8
	46				1.8
	48				1.8
50				1.8	
62				1.8	

DEMAG AC 615

200 TONNE MOBILE HYDRAULIC CRANE



HOOK BLOCK / SINGLE LINE HOOK

Type	Possible load	Number of sheaves	Weight	"D"	Number of lines
125	05,0 t	5	1400 kg	2,40 m	11
100	68.0 t	3	1150 kg	2,40m	7
40	30,0 t	1	760 kg	2,40m	3
12.5	10.0 t	Single line hook	350 kg	1,80 m	1